



VALUE THROUGH EXPERTISE

Utilização de Minerais
como modificadores de
sensorial e substituto
de microesferas

PERSONAL CARE

 **IMCD**

Percepção

- Conexão com o mundo;
- Reconhecimento e identificação



Sensação

Captação de estímulos pelos órgãos sensoriais.

Percepção

Organização e interpretação da informação sensorial que nos permite identificar objetos e acontecimentos.



Você vê mais de um Girassol?



PRODUTOS ATUAIS



- Partículas Esféricas (2 a 300 microns);

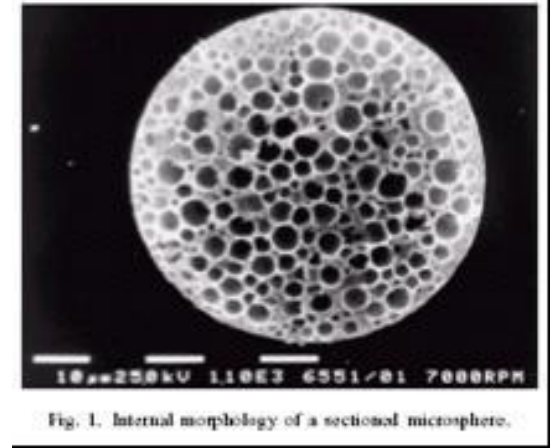
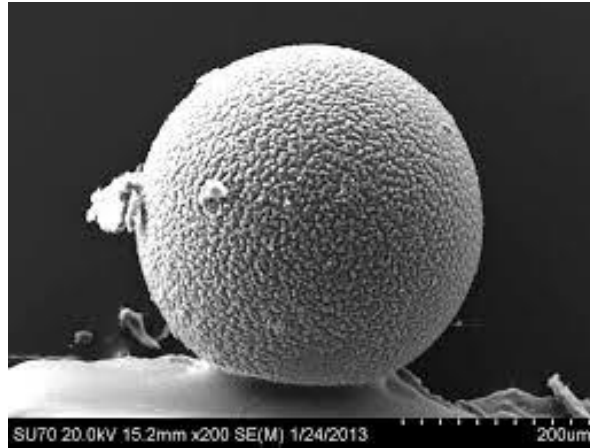
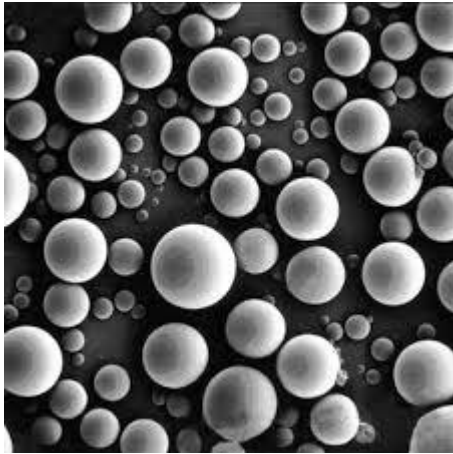


Fig. 1. Internal morphology of a sectional microsphero.

- Polimetilsilsesquioxane;
- Sílica natural ou colorida;
- Silicato de alumínio;
- Pigmentos revestidos micronizados.
- Nylon.

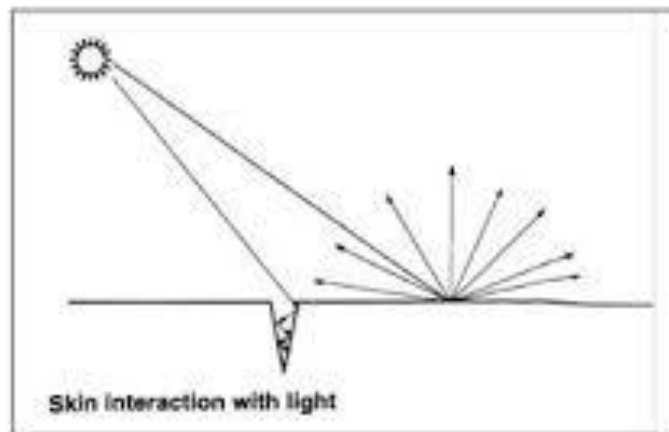
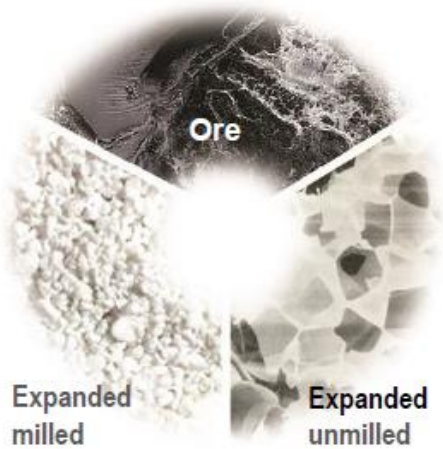


Fig1 : Ilustração efeito *soft-focus*. (In Emmert, *Cosmetics & Toiletries*, 111 (1996) 57-61)

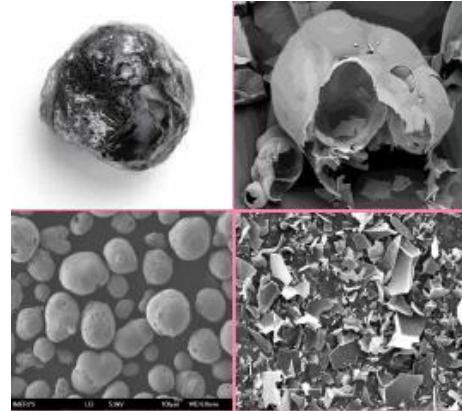


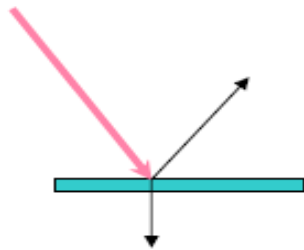


- Teor de cinzas;
- Teor de chumbo;
- Teor de ferro;
- Teor de mercúrio.



- Alta absorção (óleo e água);
- Coloração esbranquiçada (alta luminosidade);
- Sem alteração na densidade após a absorção;
- Sem efeito tac;
- Sem oleosidade;
- Carreador de fragrâncias;
- pH neutro.

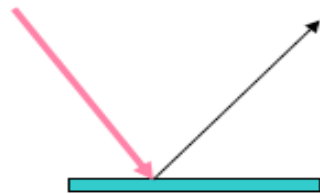




Specular reflexion
+
Partial transmission

**GLOSS &
SILK EFFECT**

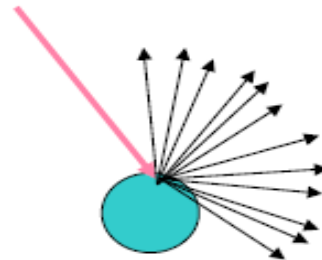
Mica
Oxychlorure of bismuth



Specular reflexion

ULTRA SHINY EFFECT

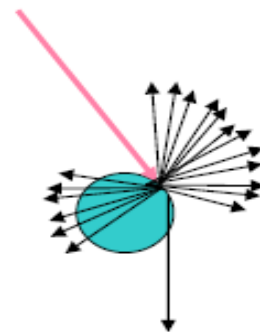
Borosilicates
Metallic pigments
Paillettes



Light diffusion

MATTING EFFECT

Perlite
Diatomite
Kaolin, Talc...



Light diffusion
+
Partial light transmission

SOFT FOCUS EFFECT

PMMA
Nylon

Silica
Composites



	Product name	INCI name	%W/W	Supplier
A	Emulgade SE PF	Glyceryl Stearate, Cetareth-20,	5	BASF
	Lanette O	Cetareth-12, Cetaryl alcohol, Cetyl palmitate	1	BASF
	Labrafac CC	Ceraryl alcohol	5	Gattefosse
	Vegelight	Caprylic/Capric Triglycerides	5	Grant
	Apricot Oil	Coconut alkanes (and) Coco-caprylates/Caprates	1	Bertin
	Bioxan SF T50	Prunus armeniaca kernel oil Tocopherol (mixed)	0.1	Masso
B	Water	Aqua	76,8	
	Glycerin	Glycerin	3	Copper
	Satixane CX911	Xanthan Gum	0.4	Univar
C	ImerCare 2K or 25P	Kaolin or perlite	2	IMERYS
D	Perfume	Parfum	0,6	
E	Preservatives	Preservatives	TBD	
F	Dermofeel PA3		0.1	
G	Bioxan Acetate 1300IU	Tocopherol Acetate	0.1	Masso
H	pH adjustor		TBD	
		Total	100	

Imercare™ 25P

% gloss at 75 deg
ImerCare™ 25P = 2.3

Imercare™ 2K

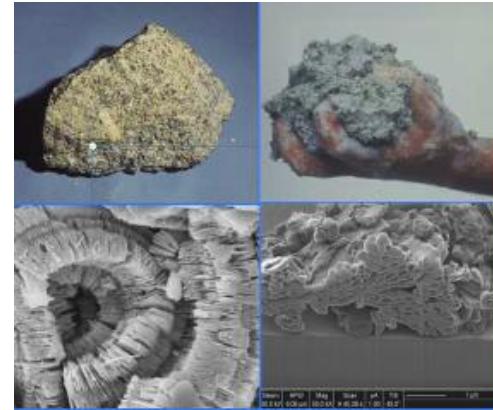
% gloss at 75 deg
ImerCare™ 2K = 14.5



KAOLIN



- Absorção de Óleo e Impurezas;
- Toque aveludado;
- Efeito opacificante;
- Reduz migração de cor;
- Efeito matte;
- Controle reológico.



Kaolin in foundations for a long lasting matifying effect

	COMMERCIAL NAME	CHEMICAL NAME	SUPPLIER	%
A	ABIL EM 90	CETYL PEG/PPG-10/1 DIMETHICONE	EVONIK	2.00
	ISOLAN GI 34	POLYCYCERYL-4 ISOSTEARATE	EVONIK	1.00
		JOJOBA (BUXUS CHINENSIS) OIL		1.00
	LABRAFAC CC	CAPRYLIC/CAPRIC TRIGLYCERIDES	GATTEFOSSE	8.00
	TEGOSOFT OP	ETHYLHEXYL PALMITATE	DEGUSSA	1.50
	XIAMETER PMX-200 SILICONE FLUID SCST	DIMETHICONE	DOW CORNING	1.00
	PARACERA W80 WAX	MICROCRYSTALLINE WAX	PARAMELT	1.20
		TOCOPHERYL ACETATE		0.90
B	WATER			61.24
	GLYCERINE	GLYCERINE		1.00
		SODIUM CHLORIDE		1.00
C	SA-C47051	TIO2 AND DIMETHICONE	MIYOSHI KASEI	6.00
	SA-C331700-102	CI77492 & DIMETHICONE	MIYOSHI KASEI	0.74
	SA-C332199-102	CI77491 & DIMETHICONE	MIYOSHI KASEI	0.41
	SA-C335000-102	CI77499 & DIMETHICONE	MIYOSHI KASEI	0.01
	FZ-3196	CAPRYLYL DIMETHICONE	DOW CORNING	5.00
D	IMERCARE 2K	KAOLIN	IMERYS	3.00
E	XIAMETER® PMX-0245 CYCLOPENTASILOXANE	CYCLOPENTASILOXANE	XIAMETER	5.00
F	PRESERVATIVES			TBD
G	FRAGRANCE			TBD
TOTAL				100.00

- Kaolin 2K with a covering power (higher particle size distribution)
- Kaolin use : 3% to 5%



European – Flower



German – Blue Angel



Nordic - Swan



COSMOS



Overview (March 2017)



≈ € 2,050 million turnover *



≈ 1,855 employees



≈ 34,000 customers

* Including commission sales

End markets

Life Sciences



Pharmaceuticals



Personal Care



Food & Nutrition

Industrial



Coatings



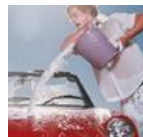
Lubricants



Synthesis



Plastics



Detergents



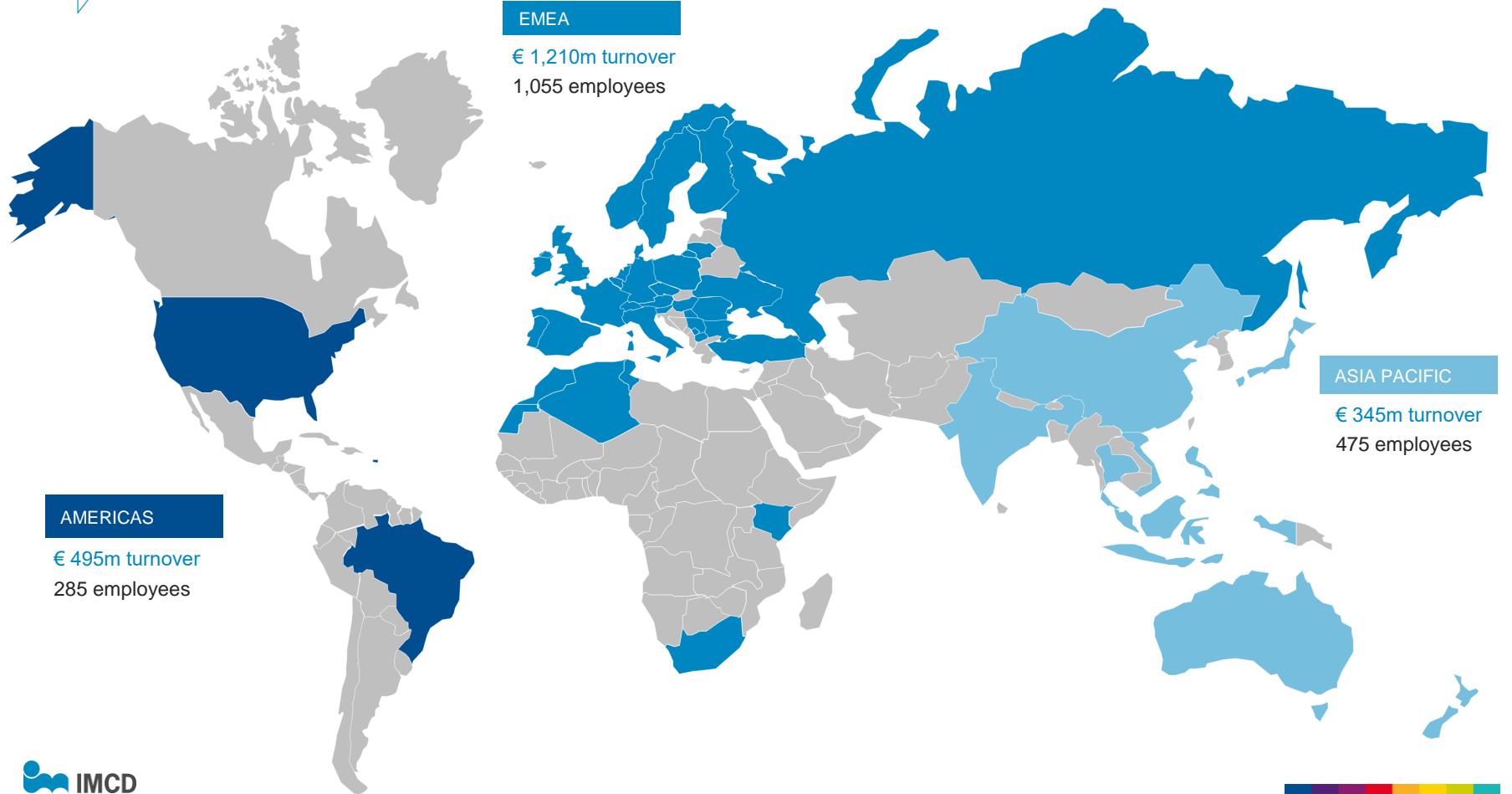
Other Industries

IMCD Global Coverage



IMCD countries





EMEA

€ 1,210m turnover
1,055 employees

AMERICAS

€ 495m turnover
285 employees

ASIA PACIFIC

€ 345m turnover
475 employees



Centres of technical excellence

📍 Coatings / Construction (6)

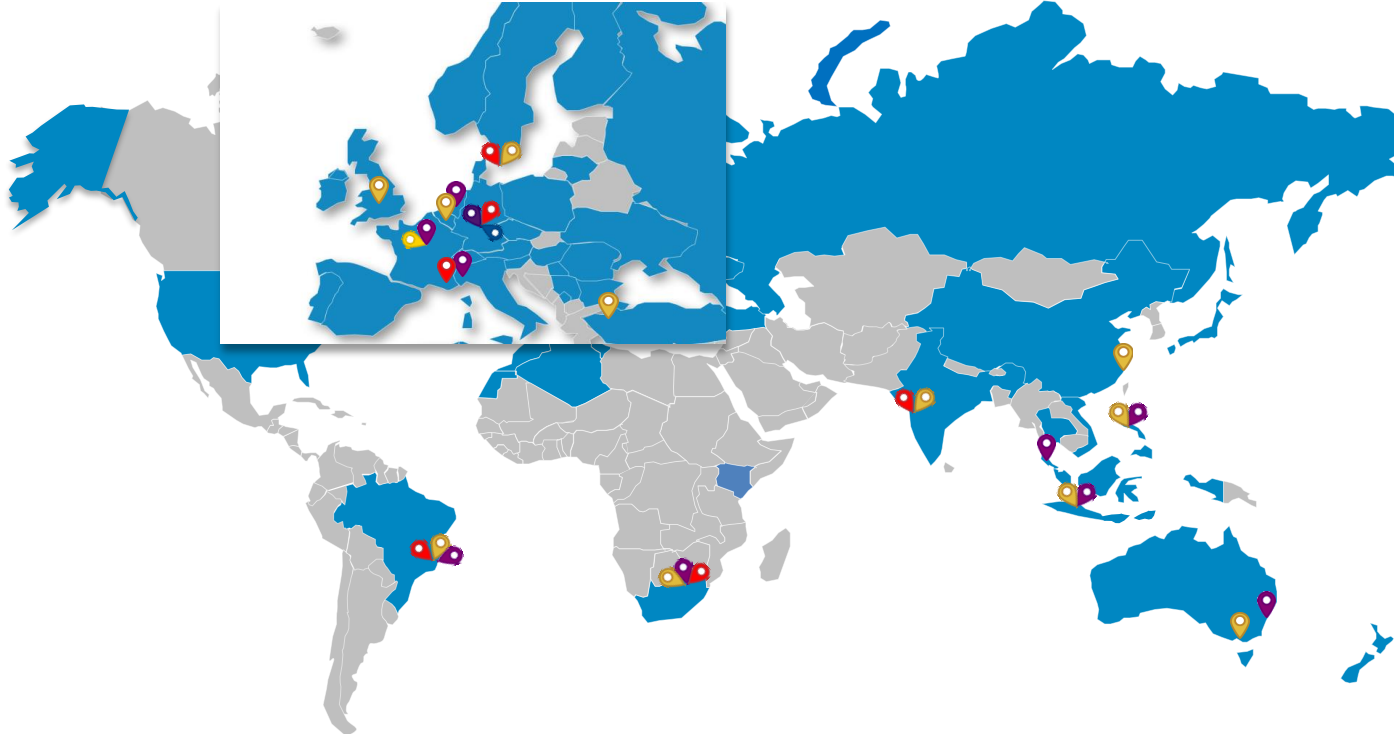
📍 Personal Care (9)

📍 Food & Nutrition (11)

📍 Pharmaceuticals (1)

📍 Detergents (1)

📍 Lubricants (1)



Overview (March 2017)



≈ € 175 million

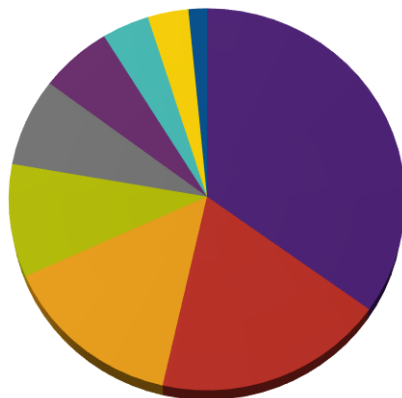


≈ 164 employees



≈ 2.500 active customers

IMCD Brasil | Market Breakdown



- PHARMACEUTICALS
- COATINGS
- FOOD
- SYNTHESIS
- OTHER SPECIALTIES
- PERSONAL CARE
- PLASTICS & RUBBER
- LUBRICANTS
- DETERGENTS & CLEANERS

IMCD Brasil | Infrastructure



VALUE THROUGH EXPERTISE

IMCD BRASIL

Daniela Oliveira

Business Head

(11) 4360-6438

daniela.oliveira@imcdbrasil.com.br

Suporte Técnico

Laboratório de Aplicação

(11) 4800 3948

monica.dias@imcdbrasil.com.br

